

300
DEPOT WAY

HAINES CITY, FL 33844

For sale
64.24 acres of industrial land



300 Depot Way,
Haines City, FL 33844





300

DEPOT WAY

The offering	3
Tenant map	4
Drive time map	5
Access map	6

THE OFFERING



Key commentary:

JLL's Industrial Team is proud to offer, on behalf of the Ownership, the 100% fee simple interest in 300 Depot Way in Haines City - a state-of-the-art industrial development opportunity poised to redefine logistics in the thriving East Polk submarket. This exceptional opportunity encompasses a potential cutting-edge industrial multi-building park or an approximate 750k SF building, strategically positioned on 64.24 acres with a straight shot to I-4 and equal distance to Orlando and Tampa.

Highlights:

- Prime Location: Situated equidistant from Orlando and Tampa, offering unparalleled access to major markets in Central Florida.
- Development Potential: Industrial multi-building park or an approximate 750k SF building on a expansive 64.24-acre site.
- Strategic Access: Direct route to I-4, facilitating efficient transportation and distribution.
- Target Users: Ideal for logistics companies seeking a central hub in Florida.
- Build-to-Suit Opportunity: Ability to construct a facility tailored to specific logistics needs.

Location

First Park @ Haines City

Address

**300 Depot Way,
Haines City, FL 33844**

Country

Polk

Total acreage

64.24 acres

Parcel ID

272804815027000000

Zoning

4001 - Vacant Industrial

Site condition

Vacant - Raw Land

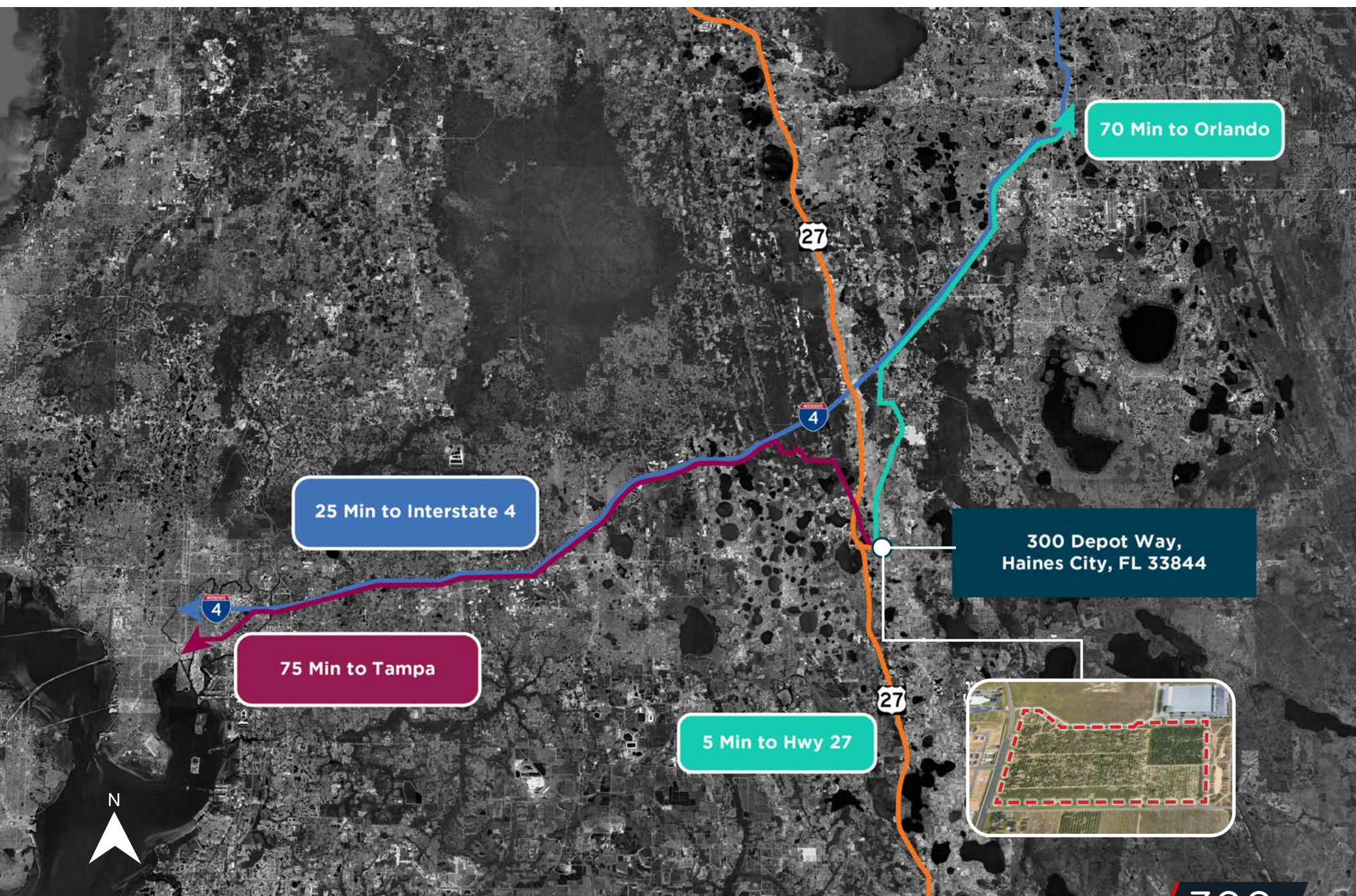
Utilities

TBD

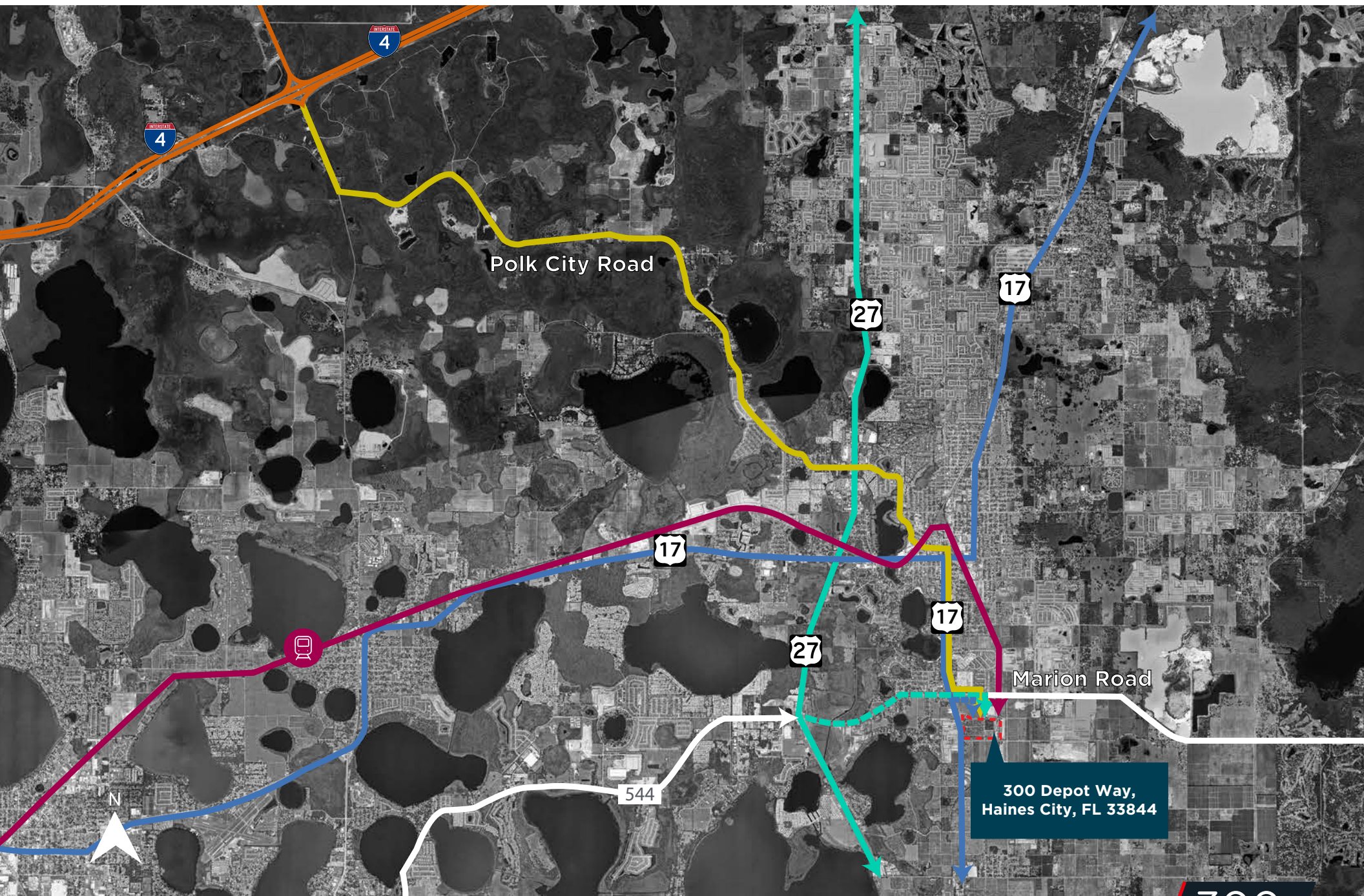
TENANT MAP



DRIVE TIME MAP



ACCESS MAP





300

DEPOT WAY

HAINES CITY, FL 33844

Contact

Peter Cecora

Exec. Managing Director
peter.cecora@jll.com
+1 813 387 1297

John C. Dunphy

Exec. Managing Director
johnc.dunphy@jll.com
+1 813 387 1312

Contact

Sky Groden

Exec. Managing Director
sky.groden@jll.com
+1 305 960 8416

Jeremy Cain

Senior Vice President
jeremy.cain@jll.com
+1 954 233 3464

