

FOR
SALE



COUNTY ROAD 544

HAINES CITY, FL | 31.06 ACRES | ZONED IPUD



CITE PARTNERS

PROPERTY SPECIFICATIONS

THE PROPERTY

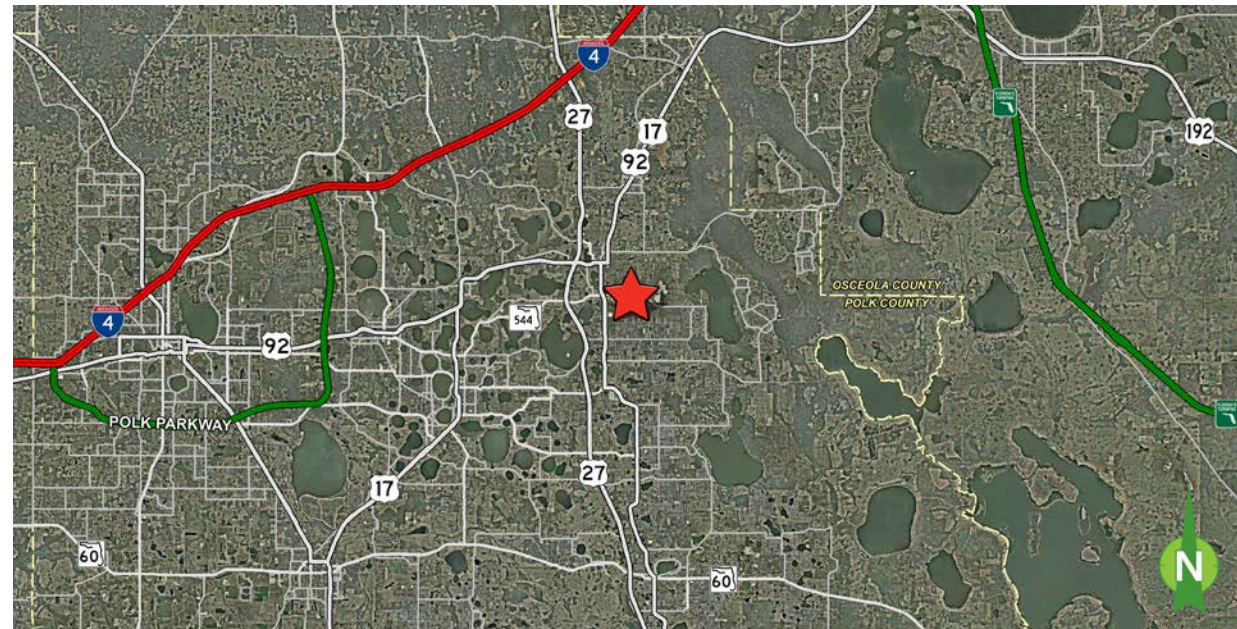
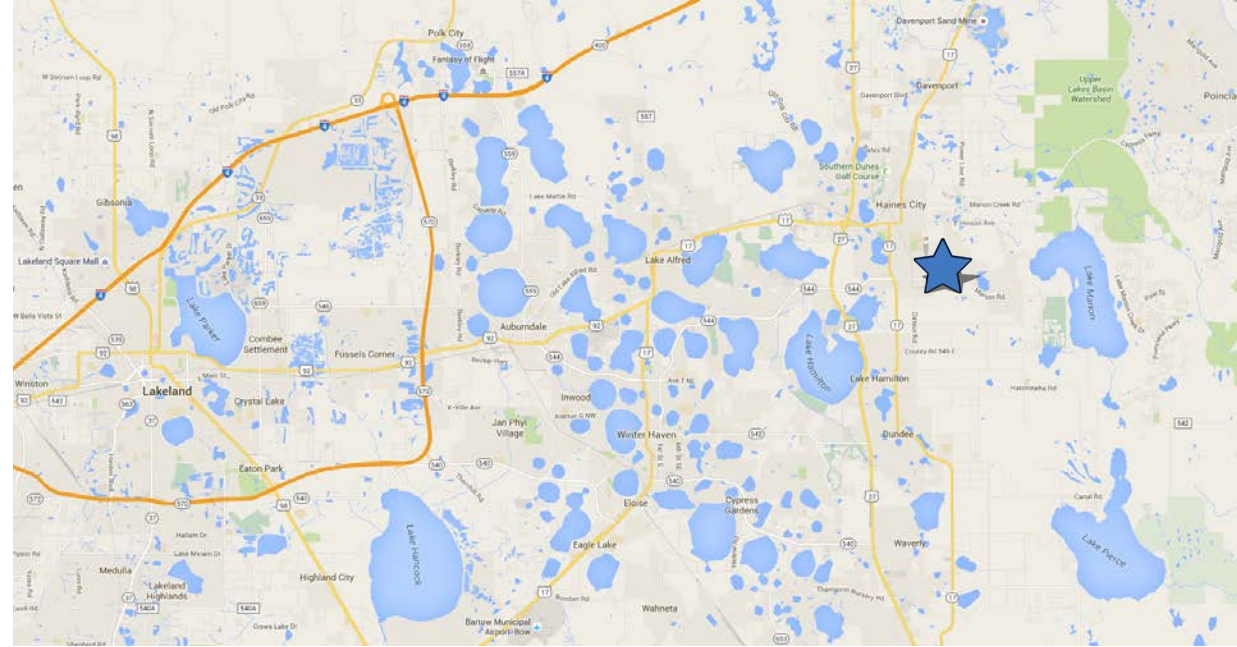
- 31.06 acres
- Zoned IPUD, City of Haines City
- Future Land Use: Business Park
- All utilities are located at CR 544
- Currently used as an orange grove
- Adjacent acreage can be assembled for a total of 83.8 acres

LOCATION

- Located on the north side of Lake Marion Road (County Road 544), east of 30th Street
- Minutes from US Highway 17-92 and US Highway 27
- Neighbors include ALDI Foods (600,000 SF); WalMart (920,000 SF); MBM Foods (200,000 SF); Sofidel (570,000 SF); and Benjamin Moore (385,000 SF).

THE PRICE

\$2,950,000 (\$95,000 per acre)



MATT SULLIVAN, SIOR, CCIM
Managing Director, Principal
matt.sullivan@citepartners.com
407.930.1802

WILSON MCDOWELL, SIOR, CCIM
Managing Director, Principal
wilson.mcdowell@citepartners.com
407.930.1801

BOBBY ISOLA, CCIM
Director, Principal
bobby.isola@citepartners.com
407.930.1804

CITE PARTNERS
100 South Orange Ave., Suite 500
Orlando, FL 32801
www.citepartners.com

Disclaimer:

This document has been prepared by Cite Partners for advertising and general information only. Cite Partners makes no guarantees, representations or warranties of any kind, expressed or implied, regarding the information including, but not limited to, warranties of content, accuracy and reliability. Any interested party should undertake their own inquiries as to the accuracy of the information. Cite Partners excludes unequivocally all inferred or implied terms, conditions and warranties arising out of this document and excludes all liability for loss and damages arising therefrom. This publication is the copyrighted property of Cite Partners and/or its licensor(s). All rights reserved.

CONCEPTUAL SITE PLAN

